

Standards for screw locking have changed and improved over the years. Therefore we adapt our products, according to remain at highest quality, best practice and reliable availability.

Product Group: Thermal Systems / Standard Range & Special Range:

Effected Products:

Connectors used as connector option, mounted connectors, packed connector sets as well as spare part connector sets.

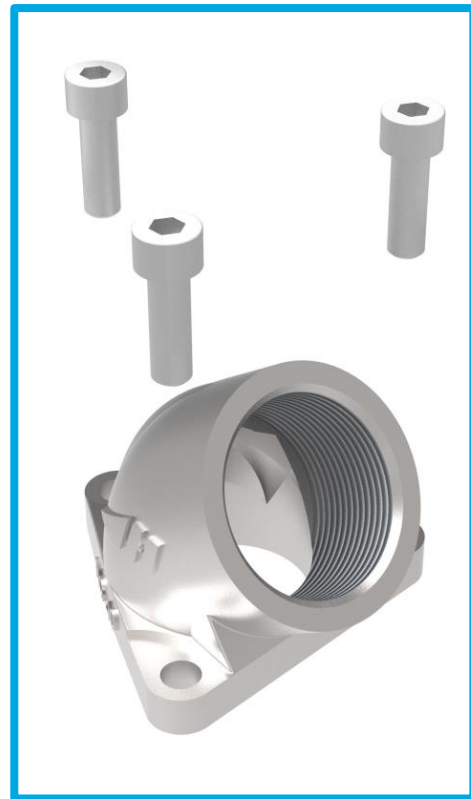
Change:

The washer spring will be left out the part lists and assemblies throughout a floating phase from on April 2020. All implementations of this product improvement for will be accomplished until July 2020.

April 2020 – July 2020



from July 2020



This product improvement has no influence on the product function. This notification has been recorded to be sent and requires no further action from your side.

Thank you for your attention.