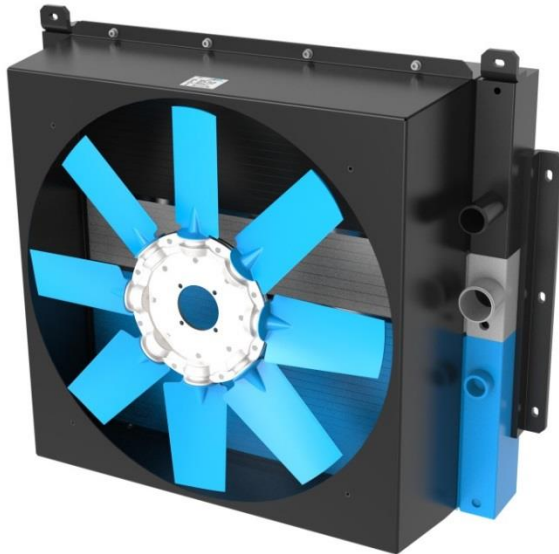


Cooler Technology

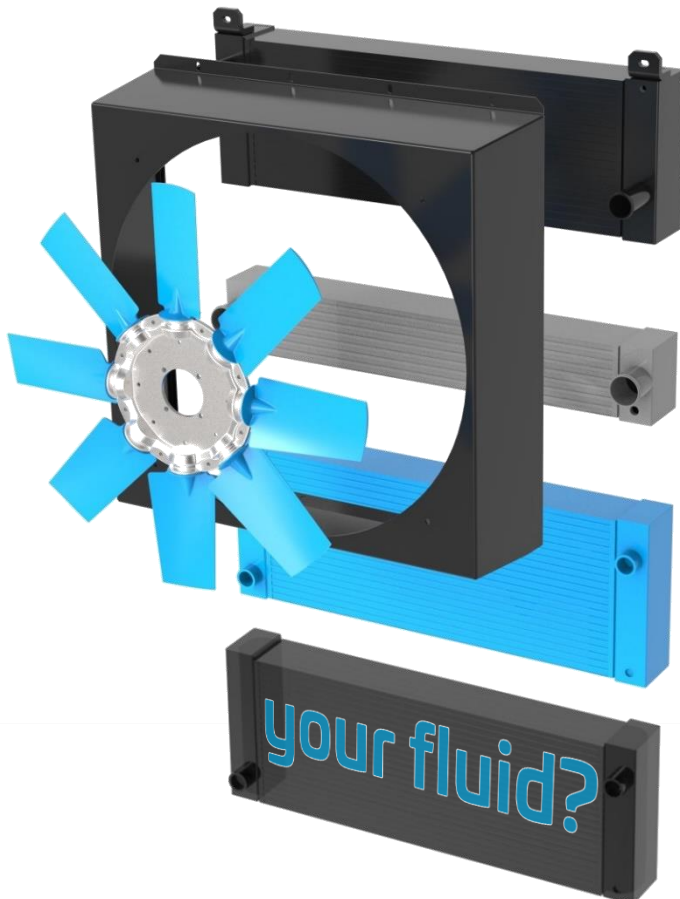
REQUIRED INFORMATION FOR SPECIAL COOLER SIZING

Apart from the actual application parameters of the fan drive, ambient conditions and scope of delivery, we offer customized cooler solutions for many types of fluids. The document should guide you to a quick enquiry for customized coolers. Please contact us at sales_us@asahydraulik.com for further assistance and consultation.



Customized Motor Solutions

- KULI documentation
- complete fan drive and air flow design
- modular setup
- high corrosion protection



Customized to your fluid

- water cooler
- changer air cooler
- oil cooler
- fuel cooler
- transmission oil cooler

Cooler Technology

REQUIRED INFORMATION FOR SPECIAL COOLER SIZING

General information:

Application :
 Space (BxWxH) :
 Ambient air temperature :
 Air flow direction :
 Scope of delivery :
 o Bare radiator
 Attached fan performance curve
 o Radiator & housing
 Attached fan performance curve
 Fan diameter :
 o Radiator, housing & fan
 Type of drive (engine shaft, Hydraulic motor, DC fan) :
 Max. fan speed :
 Max. noise level :

Water / Air cooler:

Fluid, mixing ratio :
 Heat reduction BTU :
 Inlet temperature °F :
 Max. pressure drop PSI :
 Flow GPM :
 Working pressure PSI :

Oil / Air cooler:

Fluid :
 Heat reduction BTU :
 Inlet temperature °F :
 Max. pressure drop PSI :
 Flow GPM :
 Working pressure PSI :

Charge Air / Air cooler:

Inlet Temperature °F :
 Outlet Temperature °F :
 Flow scfm :
 Max. pressure Drop PSI :
 Max. working pressure PSI :

Fuel / Air cooler:

Fluid :
 Heat reduction BTU :
 Inlet temperature °F :
 Max. pressure drop PSI :
 Flow GPM :
 Working pressure PSI :

Transmission oil cooler:

Fluid :
 Type of transmission :
 (enclose data sheet with operation parameter:
 Operation point for sizing :