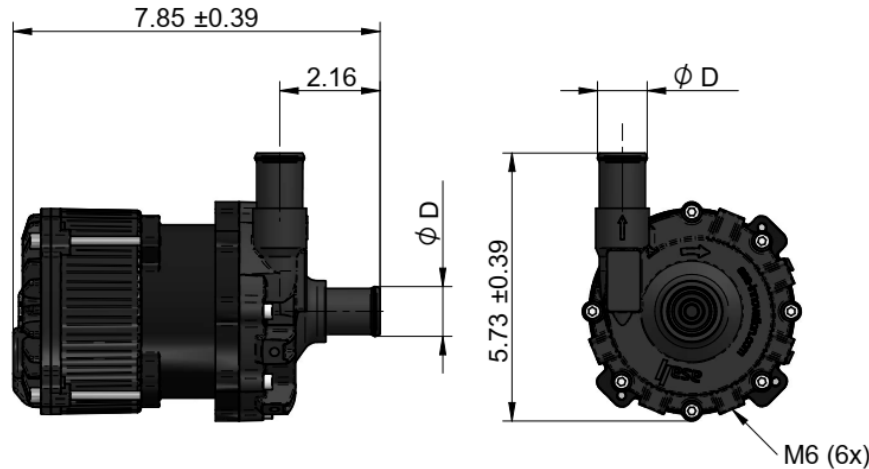
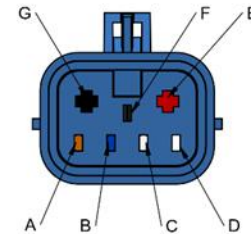


Product Description

The asa water pump is working to the centrifugal principle and uses a spiral housing with 1" or 3/4" hose connections, magnet coupling 12V DC brushless motor. The motor and the coupling are installed in an aluminum die cast housing. This motor/pump unit is mainly designed to create compact and cost efficient cooling circuits for electric devices such as battery packs, electric motors and power electronics like converters.



**Pump Connector:
Delphi Metri Pack
150/480 7 Way
Sealed Male Connector**



PIN	color	function
A	orange	reserved, not used
B	blue	PWM input
C	white	fault feedback output
D	-	-
E	red	12V
F	-	-
G	Black	GND

Technical Data

order number	description	fuse	protection	flow rate	motor type	ØD	weight
		[A]		[GPM]			[lbs]
ABPW090S20HP01U00	Water pump 24 GPM 3/4" 12V HNBR	35	IP68	see charts page 3	brushless	3/4"	7.0
ABPW090S25HP01U00	Water pump 24 GPM 1" 12V HNBR	35	IP68			1"	7.0

Materials

operating supply voltage range	9-16V
max. current	31A
housing an cover material	aluminium
sealing material (fluid side)	HNBR
working temperature range	-4°F to +248°F (pump flow derated between +185°F and +248°F)

Features

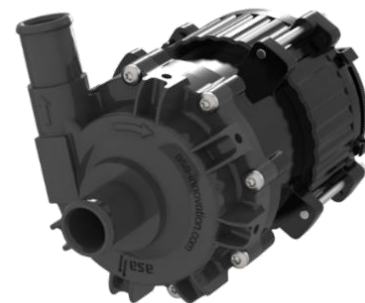
adjustable flow rate	PWM signal
diagnostic output	PWM signal
medium to be pumped	water & water-glycol

Connector Counterpart kit

connector type	Delphi Metri Pack (optional mating connector order number: ESMPWP12K)
----------------	---

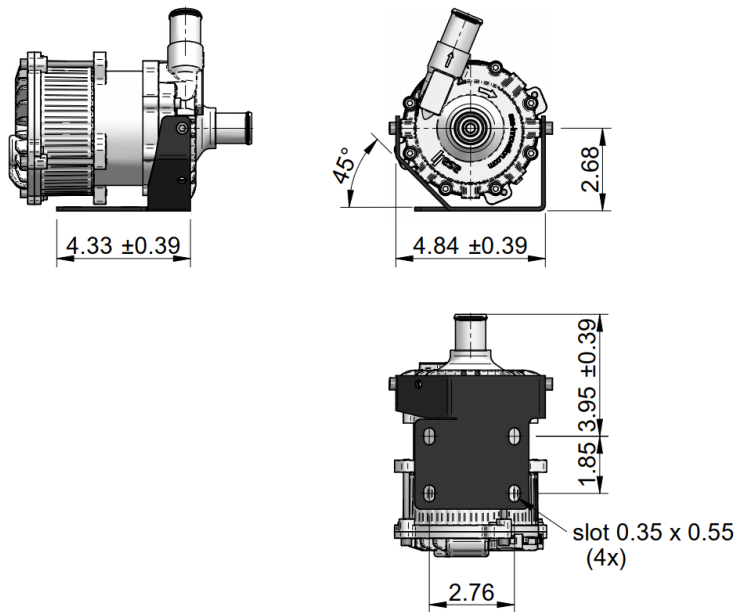
Duty cycle

Duty cycle	Definition
40%	Pump is running dry
50%	Over current
60%	Pump is jammed
70%	Over temperature
80%	Under- and Over voltage
100%	No error

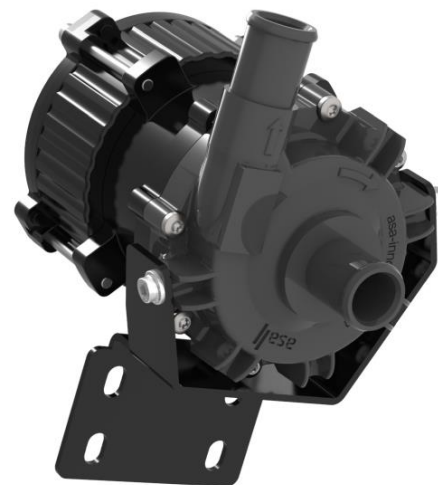
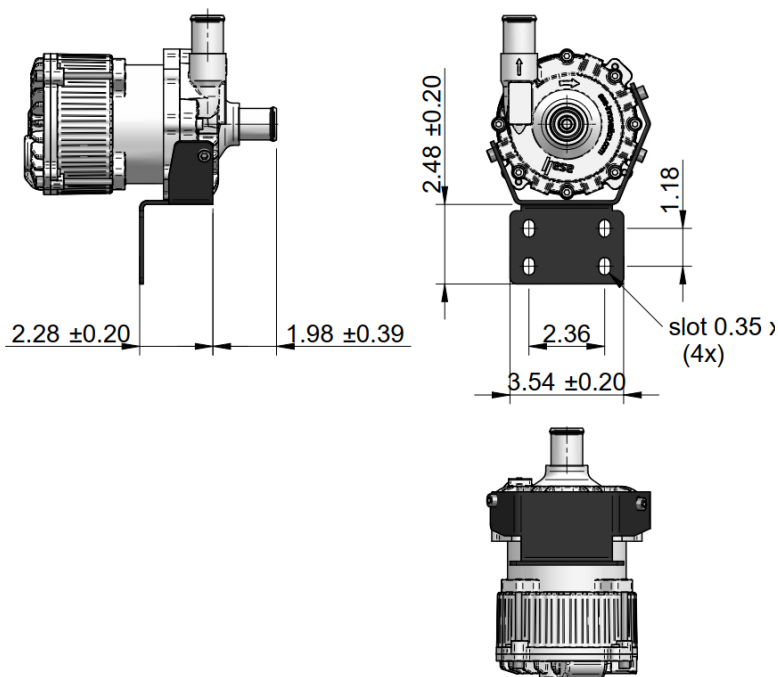


This data sheet and the corresponding scale drawings are to be used as a general guideline and technical overview of our products. Please contact us if more exact information is needed. As we are constantly improving our products, their characteristics, dimensions and weights may also change, although we do our best to incorporate these changes continually. asa assumes no liability for any information therein, any errors, omissions, misprints, nor any direct or indirect damages, losses or costs resulting therefrom. Any cooling performances and general technical values indicated in this catalogue are measured at a test bench according to asa testing procedures or calculated, based on such tests. They represent a basis for your product selection. Due to different conditions in testing and application environments the performance may also vary by +/- 15%. All sound values are determined in accordance with ISO 9614-2, DIN EN ISO 11203 accuracy class 3 or Machinery Directive 2006/42/EG and are A-rated. At some of the performance data, possible differences to competition data are possible. The reason to that are no existing standardized testing procedures on individual subjects, e.g. for cooling performance measurements. Therefore, we recommend all products to be checked under the system operating conditions. This is also true of vibrations and mechanical stress as well as for pressure peaks and thermal stress and any other relevant factors. General tolerances according to DIN ISO 2768-vL, General tolerances for casted parts according to EN ISO 8062-3 (DCTG 10). Tolerances for rubber parts are according to ISO 3302-1 (class M4-F+C). The tolerances of welding seams are defined by quality group D according to EN ISO 10042, if it is not specified on the actual scale drawing or data sheet. Any form of liability is excluded for the information included in this datasheet. All details and calculation values are checked to the best of our ability, but these do not ensure any intrinsic product properties: due to the wide-ranging possible applications, it is advised that all technical data herewith included be confirmed through testing carried out by the end-user. asa technology Produktions- und Vertriebs GmbH reserves the right to modify the product without any separate notification. This refers to both technical data and the product itself. Furthermore, it is herewith specified that the datasheet does not substitute the corresponding scale drawings, assembly and installation guidelines, nor the operating instructions.

1.) Mounting option U01



2.) Mounting option U02



This data sheet and the corresponding scale drawings are to be used as a general guideline and technical overview of our products. Please contact us if more exact information is needed. As we are constantly improving our products, their characteristics, dimensions and weights may also change, although we do our best to incorporate these changes continually. asa assumes no liability for any information therein, any errors, omissions, misprints, nor any direct or indirect damages, losses or costs resulting therefrom. Any cooling performances and general technical values indicated in this catalogue are measured at a test bench according to asa testing procedures or calculated, based on such tests. They represent a basis for your product selection. Due to different conditions in testing and application environments the performance may also vary by +/- 15%. All sound values are determined in accordance with ISO 9614-2, DIN EN ISO 11203 accuracy class 3 or Machinery Directive 2006/42/EG and are A-rated. At some of the performance data, possible differences to competition data are possible. The reason to that are no existing standardized testing procedures on individual subjects, e.g. for cooling performance measurements. Therefore, we recommend all products to be checked under the system operating conditions. This is also true of vibrations and mechanical stress as well as for pressure peaks and thermal stress and any other relevant factors. General tolerances according to DIN ISO 2768-vL, General tolerances for casted parts according EN ISO 8062-3 (DCTG 10). Tolerances for rubber parts are according to ISO 3302-1 (class M4-F+C). The tolerances of welding seams are defined by quality group D according to EN ISO 10042, if it is not specified on the actual scale drawing or data sheet. Any form of liability is excluded for the information included in this datasheet. All details and calculation values are checked to the best of our ability, but these do not ensure any intrinsic product properties: due to the wide-ranging possible applications, it is advised that all technical data herewith included be confirmed through testing carried out by the end-user. asa technology Produktions- und Vertriebs GmbH reserves the right to modify the product without any separate notification. This refers to both technical data and the product itself. Furthermore, it is herewith specified that the datasheet does not substitute the corresponding scale drawings, assembly and installation guidelines, nor the operating instructions.

Fluid Controls

Water Pump Unit 12V DC



Order Code

A B P W 0 9 0 S 2 0 H P 0 1 U 0 0
 1 2 3 4 5 6 7 8 9

1 Product Category

ABP Pumps

2 Product Series

W water pump

3 Displacement volume

090 24 GPM

4 Connection

S standard motor/pump

5 Dimensions

20 3/4"

25 1"

6 Sealing Material (medium side)

H HNBR

E EPDM (on request)

V FPM(Viton) (on request)

7 Control

P PWM

8 Voltage

01 12 V

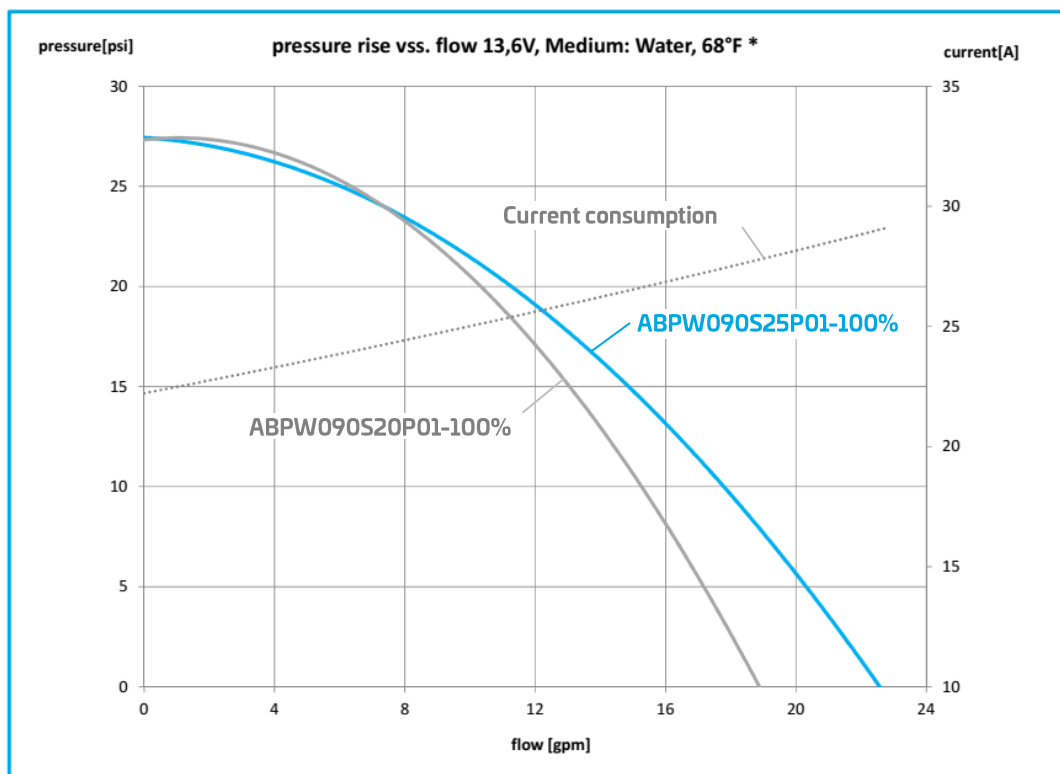
9 Index / Customized

U00 standard US sales kit

U01 mounting option picture 1

U02 mounting option picture 2

Uxx special / customized specifications; to be advised by asa



*) Tested and verified according asa standards on asa bench.